

FLONIDAN

# SciFlo®

## Smart Gas Meter

UK SERIES - G4-6UZV-2/G4-6UDZV-2

### DANISH INNOVATION geared for UK installation

The newest generation of ultrasonic gas meters designed and developed for the UK smart meter roll out.

Based on the ultrasonic measuring principle SciFlo® offers all the features of a true SMETS2 compliant gas meter. It supports energy switching and enables quick installation and commissioning.

### SPEEDY INSTALLATION & Commissioning

Supports connectivity both in the 2.4 GHz band and in the sub-GHz band acc. to the ZigBee Smart Energy Profile.

With features like Automated Band Identification and Auto Connect SciFlo® simplifies installation and commissioning and strongly reduces the need for revisits, when WAN connection is not in place.



### SUITABLE FOR SEMI-CONCEALED METER BOXES

Compact, lightweight design and superior IP class allow for installation in semi-concealed meter boxes. Tilting the meter backwards will provide easy reading of the large graphical display.

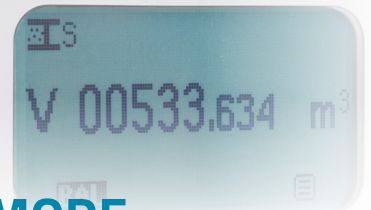


**15+ YEARS**  
of ultraprecise  
measurement

With patented ultrasound sensors and optimized meter design SciFlo® operates 15+ years on a single battery.

**CREDIT AND  
PREPAYMENT MODE**  
- in one and the same meter

With built-in valve for remote closing and safe opening SciFlo® supports both credit and prepayment mode.



# SciFlo®

# Smart Gas Meter

UK SERIES - G4-6UZV-2/G4-6UDZV-2

## Time of use

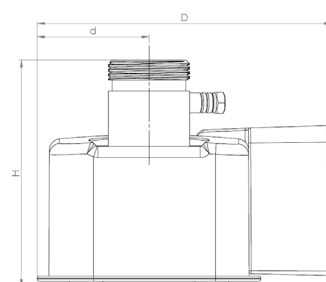
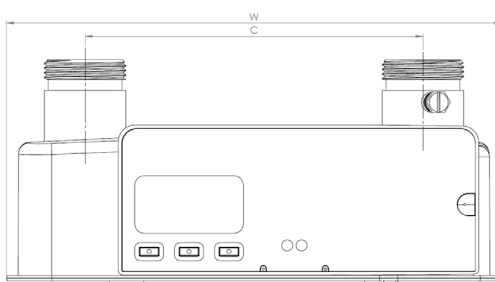
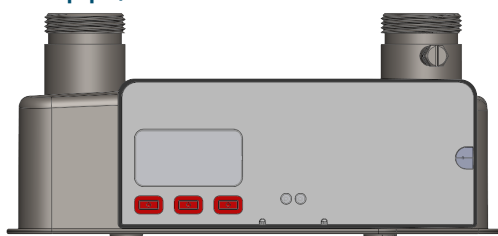
The meter supports TOU with up to 4 tariffs. Energy price is depending on the time of use. Tariff switching is performed with advanced calendar function. For each tariff, consumption will be available as m<sup>3</sup>, kWh and £.

## Block Tariff

When Block tariff function is activated, the price of energy will depend on the actual half-hourly consumption. Up to 4 rates are supported.

## Mechanical connections

### Two-pipe, 6 inch



Model	W (mm)	C (mm)	D (mm)	d (mm)	H (mm)	Connections	Weight
SciFlo®	224	152,4	135	51	103	BS1"	1.4 kg

## Specifications

Model	Q <sub>max</sub> m <sup>3</sup> /h	Q <sub>min</sub> m <sup>3</sup> /h	P <sub>max</sub> <sup>1)</sup> bar	ΔP mbar
SciFlo®	6	0.04	0,5	< 2

1) Operational pressure for valve: 0,2 bar

### MID designation

#### Electromagnetic environment:

Class E1

#### Mechanical environment:

Class M1

### Accuracy Class

1.5 (0.04m<sup>3</sup>/h - 6m<sup>3</sup>/h)

### Gas Type

Second Family (Group H, L, E)

### Battery Lifetime

1 x C-Cell

Min. 15 years of normal operation

### Temperature Range

Tamb: -10...+55°C

Tstor : -30...+60°C

Tgas: -10...+55°C

RH: Condensing

### Display

Large Graphical display,  
Menu driven, Back-lit, 8 digits,  
3 decimals

### Approvals

MID: NL122-MI002-T10801

ATEX:  II 1/2G Ex ia/ib IIB T3

### Conformity with

Enclosure IP67

Directive 2014/32/EU (MID)

EN14236:2018

EN16314:2013

(integrated valve)

SMETS 2 (UK)

OIML D11 (EMC)

(electronic index)

Directive 94/9/EC (ATEX)

ZigBee SEP 1.4