

Please look at our homepage www.flonidan.dk that you have the newest version of the document.

Gallus 2100 TCE

Installation guide

M/04110XX-000/1

Rev. 260505



1.0 General

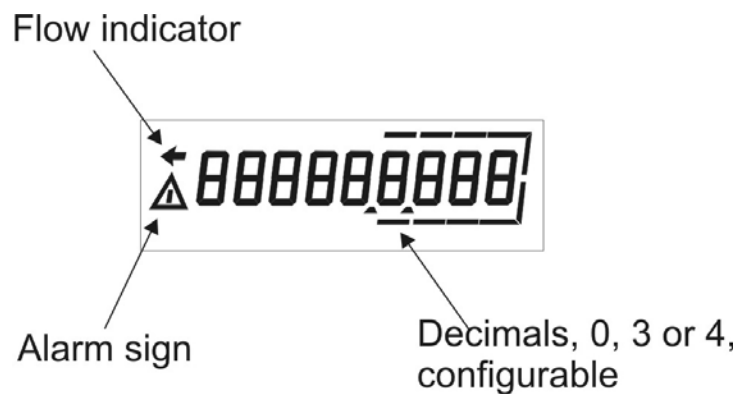
1.1 Introduction

Gallus 2100 TCE is an electronic, temperature compensated diaphragm meter, available as mono or two pipes, from Q_{max} 2.5 to 6 m³/h.

The meter is prepared for AMR - Automatic Meter Reading

Gallus 2100 will read out the accumulated consumption preferable as Nm³, Sm³, kWh or MJ, as per choice depending on the customized configuration. Only one reading is possible.

Display:



Alarm sign will be activated in case of error detected by the auto diagnostic system in the electronics.

Flow indicator

Flow indicator will flash when the meter is running.

At every cycle at the measuring unit (one cycle equals approx. 1.2 litres), the arrow will be switched on or off. That means from switch on to switch off, or switch off to switch on equals 1.2 litres.

The actual may easily be calculated by counting 10 switching on or off.

Note: count at on as well as off.

- a) Start the stop watch at off
- b) Count 1 at on
- c) Count 2 at next off, and so on
- d) At 10, stop the watch

Flow may be detected from the table,
or calculated from the formula:

$$Q = 41.13/T$$

$$Q = \text{Flow [Sm}^3\text{/h]}$$

$$T = \text{time for 10 on/off [sec.]}$$

10 on/off [seconds]	Flow [Sm³/h]
7	5.88
8	5.14
9	4.57
10	4.11
11	3.71
12	3.43
13	3.16
14	2.94
15	2.74
20	2.06
25	1.65
30	1.37
40	1.03
50	0.82
60	0.69
90	0.46
120	0.34

1.2 Mounting

Make sure that the installation is made stress less. No forces should be applied to the meter from the pipe work.

The meter must be installed horizontally, in order to provide optimal measurement.

Avoid that the meter casing touches the wall, and use preferable isolated brackets for the pipes, in order to prevent any vibrations or noise from the meter to be transferred to the wall.

Important:

Gallus 2100 TCE is a high accuracy measuring instrument, that must be handled with care. The meter should always be kept in horizontal position, in service and during transportation.

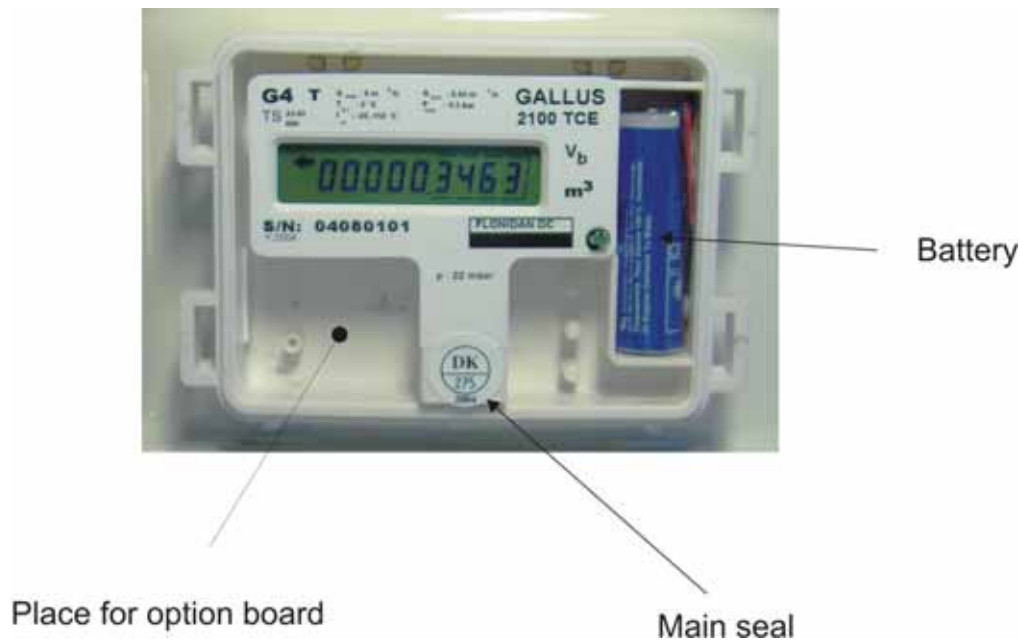


Fig. 2. The interior of the Gallus 2100 TCE

When removing the cover, access is obtained to battery compartment and option board compartment.

When installing option board, the following connections are available:

- Pulse output 1
- Pulse output 2
- Serial data output

For further details, please refer to Installation guide for Uniflo 1000 TCE

1.3 Disposal of the product after end of use.



This product is under the regulation of the EU directive 2002/95/EF, Waste Electrical and Electronics Equipment (WEEE) and has to be handled according to the directive, when it's disposed of.

Revision history

<u>Rev.</u>	<u>Init</u>	<u>Comment</u>
26.05.2005	LBF	Document created
20.11.2005	IGJ	Disposal added