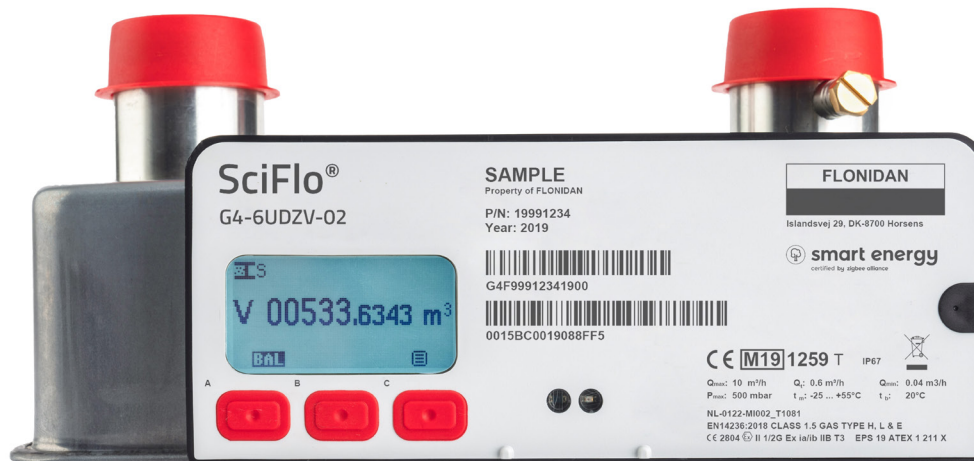


# SciFlo® Smart Gas meter



## Application

SciFlo® is a compact static gas meter based on the ultrasonic measuring principle. SciFlo® is intended for volume measurement in residential buildings where gas is used as energy source. Volume is measured using bidirectional ultrasound, based on the time of flight method.

SciFlo® is encased in a nonpainted low-weight steel housing and is operated via 1 or 3 push buttons. A large backlit graphical 128 x 64-pixel display ensures easy reading.

## Main Features

- G4/G6 in one meter
- Patented ultrasound sensors
- Nonpainted Steel Housing
- Very compact and low-weight
- IP67
- Built-in valve for remotely closing and safe opening of gas flow
- Both credit and prepayment mode
- Time of use up to 4 tariffs
- Exchangeable battery compartment

## Smart Configuration

- Optional wM-Bus (868 MHz) EN13757
- Optional NB-IoT (LwM2M)
- Optional LoRaWAN (wM-Bus)
- Optional ZigBee (2.4GHz/868 MHz) SE P 1.4
- AES & ECC encryption
- Datalogging of readings, alarms and events
- Firmware Upgrade Over The Air (OTA)

## Specifications

Model	$Q_{\max}$ m <sup>3</sup> /h	$Q_{\min}$ m <sup>3</sup> /h	$P_{\max}^{1)}$ bar	$\Delta P$ mbar
SciFlo®	10	0.04	0,5	< 2

1) Operational pressure for valve: 0,2 bar

## Battery lifetime

1 x C-Cell	Radio - wM-Bus	~ 15 years
1 x D-Cell	Radio - wM-Bus	~ 20 years
1 x D-Cell	ZigBee RF	~ 15 years

## Temperature Range

$T_{\text{amb}}$ : -10...+55°C

$T_{\text{gas}}$ : -10...+55°C

$T_{\text{storage}}$ : -30...+60°C

## Display

Graphical display, menu driven, 9 digits

Resolutions: 0, 3 or 4 decimals

## Conformity with

Directive 2014/32/EU (MID)

EN14236:2018

EN16314:2013 (integrated valve)

SMETS 2 (UK)

OIML D11 (EMC) (electronic index)

Directive 94/9/EC (ATEX)

OMS 4.02

ZigBee SEP 1.4

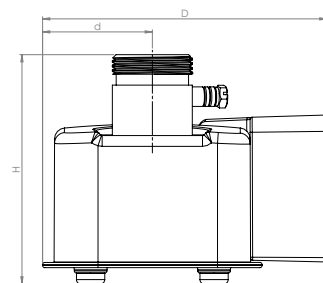
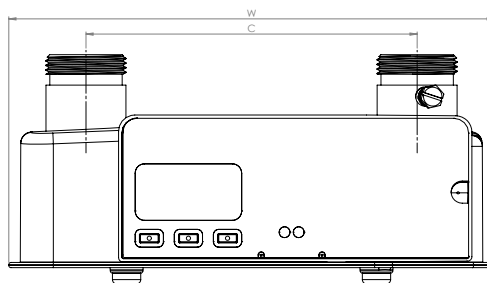
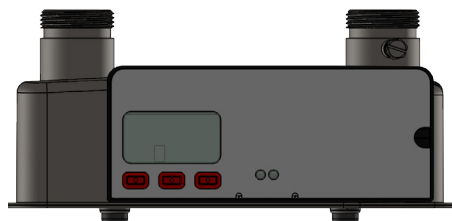
## Approvals

MID NL122-MI002-T10801

ATEX  II 1/2G Ex ia/ib IIB T3

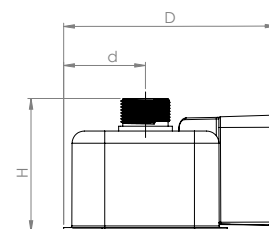
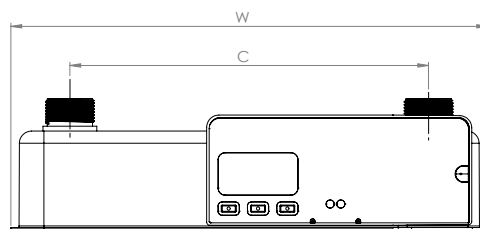
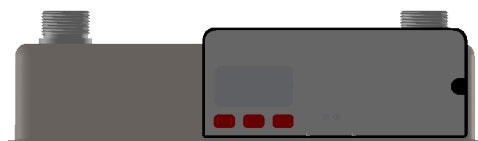
## Mechanical connections

### Two-pipe, 6 inch



Model	W (mm)	C (mm)	D (mm)	d (mm)	H (mm)	Connections
SciFlo®	224	152,4	135	51	103	BS1"

### Two-pipe, 220 mm



Model	W (mm)	C (mm)	D (mm)	d (mm)	H (mm)	Connections
SciFlo®	295	220	135	53	80	GM3/4"